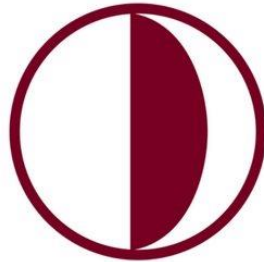


NEAR EAST UNIVERSITY



FACULTY OF ENGINEERING
AUTOMOTIVE ENGINEERING DEPARTMENT






STUDENT HANDBOOK

2025-2026 Academic Year

Contents

<i>Dean's Message</i>	5
<i>About Us</i>	6
<i>Faculty Organization Chart</i>	6
Why AUTOMOTIVE ENGINEERING Department?	8
Faculty Contact Information	8
Dean	8
Dean Assistant	8
<i>AUTOMOTIVE ENGINEERING DEPARTMENT</i>	9
Head of Department's Message	9
Program Information	10
Degree Awarded	10
Admission Requirements	10
Graduation Requirements and Regulations	10
Recognition of Prior Learning	10
Program Details	11
Program Learning Outcomes	11
Program Structure	Hata! Yer işareti tanımlanmamış.
AUTOMOTIVE ENGINEERING Department 4-year Course Program	14
AUTOMOTIVE ENGINEERING Department Elective Courses List	15
Additional Information	15
Important Notes on Elective Courses	15
Exam Regulations, Evaluation and Grading	15
Graduation Requirements	17
<i>Academic Calendar 2025-2026</i>	18
<i>Registration and Admission Procedures</i>	25
<i>Course Registration</i>	25
Add/Drop and Withdrawal	25
Lateral and Vertical Transfers	25
Communication with Academic Staff	26

Class Attendance and Excused Absences	26
<i>International Student Office</i>	26
International Student Office Working Hours:.....	26
International Student Office Contact Information:.....	27
<i>Campus Life</i>	27
Library	27
Social Activities and Student Clubs	27
Psychological Counselling Services.....	27
Office of the Dean of Students.....	27
Student Counselling and Communication Unit	28
Sports Facilities	28
For more details:.....	28
Atatürk Culture and Congress Centre (AKKM).....	28
Restaurants and Cafeterias	28
Market & Supermarket.....	29
IKAS Supermarket	29
IKAS Supermarket Express	29
NEU Event Park Drift Area	29
Accessible Cinema Hall	30
IKAS Patisserie & Bakery	30
Photocopy Services	30
Bank & ATM.....	31
Post Office	31
Near East Fuel Station	31
Useful Phone Numbers.....	31
Campus Traffic Rules and Safety	31
<i>AUTOMOTIVE ENGINEERING Department Student Information Handbook</i>	33
📍 Who ARE YOU? WHERE ARE YOU?.....	33
AUTOMOTIVE ENGINEERING DEPARTMENT	33
✓ GRADUATION REQUIREMENTS.....	33

 REGISTRATION & ADMISSION PROCEDURES	33
1. Pay the tuition fee.....	33
2. Register for courses via ogrsis.neu.edu.tr	33
3. Get advisor approval	33
4. If necessary, make changes during the “add/drop” week.....	33
 CONTACT.....	33
 MORE INFORMATION	33
 CAMPUS LIFE.....	33
 DO NOT FORGET!.....	33

Dean's Message

As the Faculty of Engineering at Near East University, we take great pride in educating the engineers of the future guided by science. Rapidly developing technologies and global needs place engineering education at the heart of progress more than ever before. At our faculty, with our strong academic staff, up-to-date curriculum, and research opportunities, we aim not only to equip our students with professional knowledge but also to foster critical problem-solving, innovative thinking, and teamwork skills essential for the 21st century.

Our mission is to ensure that our students graduate as engineers who can compete at both national and international levels, who contribute to society, remain sensitive to the environment, and are committed to ethical values. The projects, industry collaborations, and research activities carried out within our faculty provide students with valuable opportunities to reinforce their theoretical knowledge through practical applications.

As the Faculty of Engineering, we continue our work with the responsibility and enthusiasm of educating generations who will shape the future. I invite you to become a part of this strong academic family and wish you a successful academic career. We look forward to your joining us on this journey, driven by our vision of advancing science, technology, and humanity.

Prof. Dr. Bülent BİLGEHAN

Dean of Faculty of Engineering

About Us

Near East University's Faculty of Engineering was established in 1988. With its Departments of Electrical and Electronics Engineering, Mechanical Engineering, Biomedical Engineering, Automotive Engineering, Bioengineering, Mechatronics Engineering, Industrial Engineering, Materials Science and Nanotechnology Engineering, and Petroleum and Natural Gas Engineering, it has become a large faculty serving over 1,500 students.

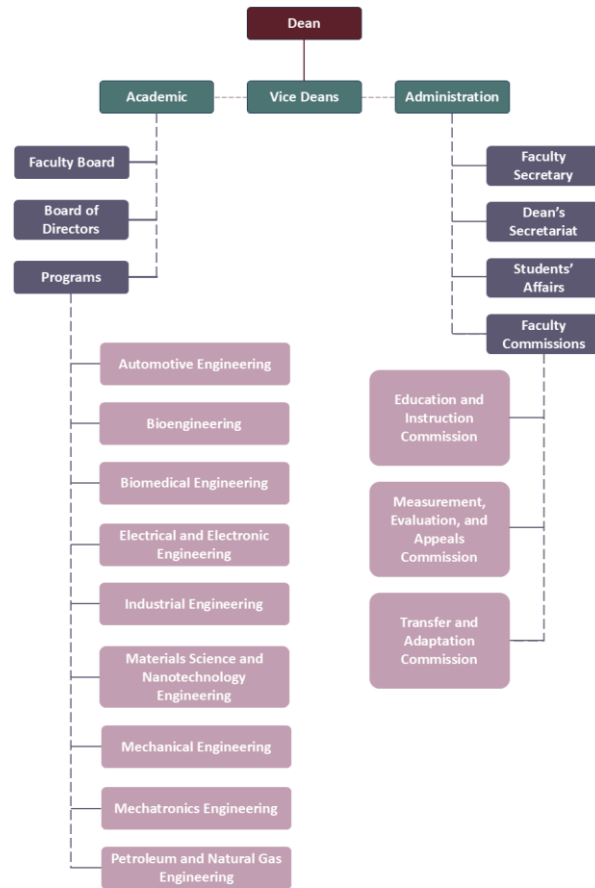
With its internationally recognized educational opportunities and strong faculty, Near East University has a deep-rooted tradition in education. Since 1988, it has been a center of education, science, and culture. With its world-class educational and infrastructure facilities and competent faculty, Near East University operates with an international and multicultural identity. Standing out as the Mediterranean's leading science and culture center, Near East University is committed to educating its students as self-confident, responsible individuals who prioritize rationality, creativity, innovation, inquiry, and free-thinking.

With this vision, Near East University has achieved significant success at the international level. In the 2025 Times Higher Education (THE) World University Rankings, it maintained its title as the "best university in the TRNC" by ranking in the 601-800 band, solidifying its place among the top five universities in Turkey and the top three among foundation universities. Near East University is ranked 689th globally, 7th in Turkey, and 1st in the TRNC on the US-based USNews & World Report's "Best Global Universities 2024-2025" list. According to the results of THE's 2025 Impact Rankings, our university ranked 43rd in the world for its work on the United Nations Sustainable Development Goals, 35th in the "Partnerships for the Goals" category, 48th in "Health and Well-being," 13th in "Quality Education," 15th in "Sustainable Cities and Societies," and 57th in "Gender Equality." Furthermore, in the field-based evaluation, our university ranked in the 200–250 bands for Physical Sciences, 250–300 bands for Computer Science, 300–400 bands for Engineering and Education, 500–600 bands for Social Sciences, 600–800 bands for Life Sciences, and 800–1000 bands for Medicine and Health. It also shared the title of "best Turkish university" in Turkey and the TRNC, particularly in the fields of Physics and Computer Science. With its performance in teaching, research, and international outlook, including the THE Young University Rankings 2024, the university has also earned a strong place among young universities.

The 2024 ranking results demonstrate Near East University's young, dynamic, and research-focused structure at an international level. Ranked 139th globally among universities under 50 years old in the Young University Rankings published by Times Higher Education (THE), our university has become a prominent institution among young universities.

Our university also achieved significant success in the 2024 Field-Based Academic Ranking published by Shanghai Rankings. Ranked among the top 400 universities globally in Physics, Near East University is ranked among the best universities in Turkey, alongside Boğaziçi University and Bilkent University. In Mathematics, it ranks in the 401-500 band, placing it among the top three universities in Turkey. These rankings reflect Near East University's strong research infrastructure in the basic sciences, its qualified academic staff, and its globally recognized publication performance.

Faculty Organization Chart



Why AUTOMOTIVE ENGINEERING Department?

Automotive Engineering is one of the most dynamic and future-oriented branches of engineering, combining the principles of mechanical, electrical, electronic, materials, and computer sciences to design, develop, and improve modern vehicles and mobility systems. The discipline not only focuses on traditional automotive technologies but also emphasizes emerging areas such as electric and hybrid vehicles, autonomous driving, advanced safety systems, and sustainable transportation solutions. Through a well-balanced curriculum of theoretical courses and hands-on laboratory work, students gain interdisciplinary knowledge and practical skills that prepare them to meet the demands of a rapidly changing global industry.

The department also encourages creativity, innovation, and teamwork through design projects, internships, and research activities that connect students with real-world challenges. By choosing Automotive Engineering, students take part in a field where technology, sustainability, and innovation come together, opening the door to diverse career opportunities in research and development, production, and management across the international automotive sector.

Faculty Contact Information

Dean

Prof. Dr. Bülent BİLGEHAN

Near East University, Faculty of Engineering

Near East Boulevard, PK: 99138 Nicosia / TRNC Mersin 10 – TURKEY

Phone: +90 (392) 675 10 00

E-mail: bulent.bilgehan@neu.edu.tr

Dean Assistant

Sude DURMAZ

Near East University, Faculty of Engineering

Near East Boulevard, PK: 99138 Nicosia / TRNC Mersin 10 – TURKEY

Phone: +90 (392) 675 10 00/

E-mail: sude.durmaz@neu.edu.tr

AUTOMOTIVE ENGINEERING DEPARTMENT

Head of Department's Message

Dear Students,

Welcome to the Department of Automotive Engineering at Near East University.

In an era defined by global challenges such as climate change, energy transition, technological disruption, and the demand for sustainable mobility, the need for engineers who are innovative, ethical, and globally responsible is greater than ever. Our department is dedicated to educating future automotive engineers who will not only master engineering knowledge but also apply it creatively to shape a cleaner, smarter, and more sustainable world.

Rooted in the principles of mechanical, electrical, and computer engineering and enriched by new developments in electric mobility, autonomous driving, and intelligent systems, our program nurtures critical thinkers and problem solvers who can tackle complex interdisciplinary challenges while upholding the values of innovation, safety, and sustainability.

We believe that engineering education should not only prepare students for professional success but also empower them to act responsibly and courageously in addressing the needs of society and the planet. Through our diverse academic community, industry collaborations, and student-centred approach, we encourage bold thinking, teamwork, and a lifelong passion for learning.

You are joining a department that values not only technical excellence but also creativity, collaboration, and a vision for a better future. We look forward to supporting you on this meaningful and transformative journey.

Warm regards,

Assist. Prof. Dr. Cemal Kavalcioglu
Head of the Department
Department of Automotive Engineering
Near East University

Contact:

Assist. Prof. Dr. Cemal Kavalcioglu

Phone: +90 (392) 223 64 64

E-mail: cemal.kavalcioglu@neu.edu.tr

Program Information

The main objective of the Automotive Engineering Program is to educate qualified engineers who are needed in the field of automotive engineering. The program aims to provide students with comprehensive knowledge and skills in areas such as automotive systems, internal combustion and electric powertrains, vehicle dynamics, material technologies, manufacturing processes, emission and environmental standards.

In this regard, the program seeks to enhance students' competencies in analytical thinking, problem-solving, design, research and development, and the creation of innovative applications. Furthermore, it aims to train engineers who are ethically responsible, environmentally conscious, capable of teamwork, and competitive on a global scale.

Degree Awarded

B.Sc. in Automotive Engineering

Admission Requirements

For international students;

- High school diploma (Admission of international students is based on their high school credentials.)
- Proof of English language proficiency

For Turkish Cypriot students;

- Admission of Turkish Cypriots is based on the Near East University Entrance and Placement exam.
- Proof of English Language proficiency is required.

Program Structure, Graduation Requirements and Regulations

The undergraduate program in Automotive Engineering consists of a total of 240 ECTS credits and 55 courses. Excluding common compulsory and elective courses, there are at least 5 courses in each semester. Each program includes common compulsory courses determined by the Council of Higher Education (YÖK) in Türkiye and other common courses determined by the University Senate. Starting from the third year, elective courses are offered in each semester. Each undergraduate program includes at least 13 elective courses.

ECTS also helps with the planning, delivery and evaluation of study programmes, and makes them more transparent (http://ec.europa.eu/education/ects/ects_en.htm) .

Recognition of Prior Learning

At Near East University, full-time students may be exempted from certain courses in accordance with the relevant regulations. If a course previously completed at another higher education institution is deemed equivalent in content to a course offered at NEU, the student may be granted exemption upon evaluation of the course content and approval by the relevant faculty or institute.

Program Details

To graduate, students are required to complete courses totaling 240 ECTS credits. Automotive Engineering students must successfully complete both compulsory courses and technical elective courses in order to fulfill the 240 ECTS credit requirement. Otherwise, they will not be considered to have met the graduation requirements of the program.

In our programs, a minimum class attendance requirement of 70% is applied. Students who fail to meet the required attendance are assigned the letter grade NA (Never Attended) for the respective course. The NA grade is given to students who do not fulfill the attendance requirement and thereby lose the right to participate in end-of-semester assessments. The NA grade is not included in the GPA calculation. In subsequent semesters, the same 70% attendance requirement applies if the student retakes the course. However, for courses in which the student previously received an FF grade, the 70% attendance requirement does not apply when retaking the course.

Program Learning Outcomes

Students who successfully complete the **Automotive Engineering Program**:

- Acquire theoretical and practical knowledge in fundamental engineering sciences and core areas of automotive engineering, including vehicle dynamics, powertrain systems, materials and manufacturing technologies, and control systems.
- Effectively apply the knowledge and skills they have gained to the design, analysis, and development of automotive systems.
- Utilize modern engineering tools, information technologies, and simulation software efficiently.
- Identify, model, and analyze complex engineering problems and develop appropriate solution methods.
- Gain competence in designing experiments, conducting experiments, collecting data, and interpreting the results.
- Develop teamwork skills, interdisciplinary collaboration abilities, and leadership capabilities.
- Achieve proficiency in written and oral Turkish communication as well as professional-level foreign language skills.
- Demonstrate awareness of professional and ethical responsibilities, considering social, environmental, and legal impacts in engineering practices.
- Recognize the necessity of lifelong learning and develop themselves to adapt to innovations.
- Be equipped to work in the national and international automotive industry, research and development centers, and academic institutions.

14

Automotive Engineering Department Elective Courses List

ELECTIVE COURSE						
CODE	COURSE NAME	COURSE TURKISH NAME	T	P	C	E
AUE 411	Transmission Systems	Transmisyon Sistemleri	3	0	3	3
AUE 421	Fuel Cells	Yakıt Hücreleri	3	0	3	3
AUE 422	Internal Combustion Engine Design	İçten Yanmalı Motor Tasarımı	3	0	3	3
AUE 431	Electronic Systems in Vehicles	Araçlardaki Elektronik Sistemler	3	0	3	3
AUE 432	Automotive Sensors and Measurement Systems	Otomotiv Sensörleri ve Ölçüm Sistemleri	3	0	3	3
AUE 432	Electric and Hybrid Vehicle	Elektrikli ve Hibrit Araç	3	0	3	3
AUE 441	Intelligent Vehicle Technology	Akıllı Araç Teknolojisi	3	0	3	3
AUE 442	Electronic Instrumentation	Elektronik Enstrümantasyon	3	0	3	3
MCT 444	Theory and design of wind energy turbines for mechatronics Uygulamaları için rüzgar enerjisi türbinlerinin teori ve tasarımı		3	0	3	3
RESTRICTED ELECTIVE COURSES						
CODE	COURSE NAME	COURSE TURKISH NAME	T	P	C	E
ECC 426	ECONOMICS FOR ENGINEERS	MÜHENDİSLER İÇİN EKONOMİ	3	0	3	4
ECC 427	MANAGEMENT FOR ENGINEERS	MÜHENDİSLER İÇİN YÖNETİM	3	0	3	4
ECC 101	INTRODUCTION TO COMPUTERS AND PROGRAMMING	BİLGİSAYARA GİRİŞ VE PROGRAMLAMA	2	2	3	3
ENG 201	ORAL COMMUNICATION SKILLS	SÖZLÜ İLETİŞİM BECERİLERİ	3	0	3	3
MTH 232	Mathematics for Engineers	Mühendisler için Matematik	3	0	3	3
AUE 315	Basic Electricity & Electronics	Temel Elektrik & Elektronik	3	0	3	3
AUE 316	Vehicle Comp. & Body Design	Araç Parça ve Gövde Tasarımı	2	2	3	3
ECC 314	Dynamics of Machine Systems	Makina Sistemleri Dinamiği	3	2	4	3
MEER427	Engineering Ethics	Mühendislik Etiği	2	0	2	2
NTE - NON - TECHNICAL ELECTIVE COURSES						

Additional Information

To graduate, students must successfully complete courses totalling 240 ECTS credits. Automotive Engineering students are required to fulfil both compulsory and technical elective course requirements to meet the 240 ECTS graduation threshold. Otherwise, they will not be considered eligible for graduation.

A minimum attendance rate of 70% is mandatory in all courses across our programs. Students who fail to meet this requirement receive an NA (Never Attended) grade for the relevant course. This grade is given to those who do not satisfy the attendance condition and lose the right to participate in end-of-term evaluations. The NA grade is not included in the GPA calculation.

In future semesters, students must still fulfil the 70% attendance requirement for the same course. However, in the case of a course repeated due to an FF (Failing Grade), the 70% attendance requirement is not enforced.

Important Notes on Elective Courses

Students enrolled in the Automotive Engineering program are required to complete at least 13 elective courses to graduate. These courses must be selected from the approved list of electives provided within the program. Courses that are not included in this list will not be recognized as electives. The ECTS credit value of each elective course must be equal to or greater than the credit values specified in the curriculum.

Exam Regulations, Evaluation and Grading

At our university, student performance is generally assessed through in-person examinations, including a midterm exam and a final exam. However, in some courses, alternative assessment methods such as project assignments, presentations, homework, quizzes, and group work are also employed to encourage active participation and evaluate a range of skills.

The method of assessment for each course may vary depending on the nature of the course and the instructor's approach. Assessment criteria are communicated to students at the beginning of the semester and are clearly outlined in the course syllabus.

The final course grade is calculated based on the weighted average of all evaluations conducted throughout the term, including exams, assignments, and any additional components. Therefore, students are expected to actively engage not only in exams but in all forms of assessment during the semester. At Near East University, students receive one of the letter grades described below for each course, based on the assessment conducted by the course instructor. Each letter grade corresponds to a specific ECTS credit weight.

NOT	HARF NOTU	KATSAYI	AKTS NOTU
90-100	AA	4.0	A
85-89	BA	3.5	B*
80-84	BB	3.0	B*
75-79	CB	2.5	C*
70-74	CC	2.0	C*
60-69	DC	1.5	D
50-59	DD	1.0	E
49-00	FF	0.0	F

To be considered successful in a course: Students in **Level 5 (Associate)** and **Level 6 (Bachelor's)** programs must receive at least a **DD.**, Students in **Level 7 (Master's)** programs must obtain at least a **CC.**, Students in **Level 8 (Doctoral)** programs must earn at least a **BB.** For non-credit courses not included in GPA calculations, students must receive an **S (Satisfactory)** grade.

In addition to local letter grades, each grade has an **ECTS equivalent**, which facilitates student mobility between institutions. The grading table above is used for all courses offered by Near East University.

Besides standard letter grades, the following special grades may also appear on student transcripts:

Grade Meaning

I	Incomplete
S	Satisfactory
U	Unsatisfactory
P	Successful Progress
NP	Not Successful Progress
EX	Exempt
NI	Not Included
W	Withdrawal
NA	Never Attended

I (Incomplete): Assigned to students who fail to complete course requirements due to a valid reason approved by the instructor. Students must fulfil all outstanding obligations within one week after the official grade submission deadline. In exceptional cases, the deadline may be extended up to two weeks before the start of the next semester by the relevant academic board. Failure to meet the requirements within the given timeframe results in an automatic **FF** or **U** grade.

S (Satisfactory): Given to students who successfully complete non-credit courses.

U (Unsatisfactory): Given to students who fail non-credit courses.

P (Successful Progress): Assigned to students in courses with multi-semester requirements, where GPA is not calculated, and progress during the term is deemed satisfactory.

NP (Not Successful Progress): Assigned when expected progress is not achieved in multi-term courses that do not count toward GPA.

EX (Exempt): Given to students exempt from a specific course in the curriculum.

NI (Not Included): Indicates a course that is listed on the transcript but not included in the GPA calculation or official program requirements.

W (Withdrawal): Assigned when a student withdraws from a course between the 3rd and 10th week of the semester with approval from both their academic advisor and course instructor. Withdrawals are not allowed during the first two semesters. A student may withdraw from a maximum of **two courses** in associate programs and **four courses** in bachelor's programs. Courses with a prior **W** grade that did not affect the GPA cannot be withdrawn from again. The student must retake the course in the first term it is offered again.

NA (Never Attended): Given to students who fail to meet the minimum attendance requirement and lose the right to participate in final assessments. This grade is not included in the GPA.

On all student transcripts, both national letter grades and their corresponding ECTS equivalents are shown.

Graduation Requirements

To graduate from this undergraduate program, students must meet the following requirements;

Successfully complete all courses in the curriculum with at least 240 ECTS credits and a minimum grade of DD/S and have a Cumulative Grade Point Average (CGPA) of at least 2.00 out of 4.00.

Academic Calendar 2025-2026

	FALL TERM
July 01, 2025; Tuesday	Intern Rotations Commence for Year 6: Faculty of Medicine
September 08, 2025; Monday	Last Day for the 1st Payment of the Fees (Full Payments and 1st Instalment)
September 08, 2025; Monday	Classes Commence for Years 2, 3, 4 and 5: Faculty of Medicine
September 08-12, 2025; Monday-Friday	Courses to be assigned to the Academic Staff
September 11-15, 2025; Thursday Monday	Activation of the Courses
September 08, 2025; Monday	Classes Commence for Years 1 and 2: Faculty of Medicine
September 15, 2025; Monday	English, Arabic and Turkish Proficiency Exams for Undergraduate Students
September 15-19, 2025; Monday-Friday	Course Registration
September 18, 2025; Thursday	English Language Proficiency Exam for Postgraduate Students
September 19, 2025; Friday	Last Day for Postgraduate thesis juries
September 22, 2025; Monday	Classes Commence (including the Preparatory Schools)
September 30, 2025; Tuesday	Exemption Exam for Common Courses (Courses in English)
October 02, 2025; Thursday	Exemption Exam for Common Courses (Courses in Turkish)

	FALL TERM
October 08, 2025; Wednesday	Last Day for the Payment of the 2nd Instalment of the Fees (for 8 Instalments)
October 08, 2025; Wednesday	Last Day for Changing the "I" (Incomplete) Grades for the Previous Term
October 10, 2025; Friday	Last Day for International Students to Withdraw
October 10, 2025; Friday	Last Day for Add/Drop
October 24, 2025; Friday	Last Day for Late Registration
October 29, 2025; Wednesday	Public Holiday
November 07, 2025; Friday	Last Day for Add/Drop for New International Students
November 08, 2025; Saturday	Last Day for the Payment of the 3rd Instalment of the Fees (for 8 Instalments)
November 08-14, 2025; Saturday Friday	Mid-term Exams
November 15, 2025; Saturday	Public Holiday
November 17-21, 2025; Monday- Friday	English Preparatory School Module 1 Final Exams
December 08, 2025; Monday	Last Day for the Payment of the 4th Instalment of the Fees (for 8 Instalments)
December 08, 2025; Monday	Identification of Courses for the Following Academic Term and Commencement of the Work on the Timetable
December 19, 2025; Friday	Last Day for Withdrawal

	FALL TERM
December 23, 2025; Tuesday	Last Day for Entry of NA Grades into the System
December 25, 2025; Thursday	Administrative Holiday for Students
December 30, 2025; Tuesday	Last Day of Classes
January 01, 2026; Thursday	Public Holiday
January 02, 2026; Friday	Administrative Holiday for Students
January 05-14, 2026; Monday Wednesday	Final Exams
January 08, 2026; Thursday	Last Day for the Payment of the 2nd Instalment of the Fees (for 2 Instalments)
January 08, 2026; Thursday	Last Day for the Payment of the 5th Instalment of the Fees (for 8 Instalments)
January 12-18, 2026; Monday- Sunday	Semester break for Year 4: Faculty of Medicine
January 17, 2026; Saturday	Last Day for the Grade Submission
January 19-23, 2026; Monday- Friday	English Preparatory School Module 2 Final Exams
January 20-21, 2026; Tuesday Wednesday	Graduation Ceremonies
January 26-08 February 2026; Monday-Sunday	Semester break for Years 1, 2 and 3: Faculty of Medicine

	FALL TERM
February 02-08, 2026; Monday-Sunday	Semester break for Year 5: Faculty of Medicine
	SPRING TERM
January 29-30, 2026; Thursday-Friday	Courses to be assigned to the Academic Staff
February 02-03, 2026; Monday-Tuesday	Activation of the Courses
February 02-06, 2026; Monday-Friday	Diploma Distribution
February 04-06, 2026; Wednesday-Friday	Course Registration
February 05, 2026; Thursday	First English Language Proficiency Exam of the Semester for Postgraduate Students
February 06, 2026; Friday	Last Day for Postgraduate thesis juries
February 06, 2026; Friday	English, Arabic and Turkish Proficiency Exams for Undergraduate Students
February 08, 2026; Sunday	Last Day for the Payment of the 6th Instalment of the Fees (for 8 Instalments)
February 09, 2026; Monday	Classes Commence (including the Preparatory Schools)
February 16, 2026; Monday	Exemption Exams for Common Courses (Courses in English)
February 17, 2026; Tuesday	Exemption Exams for Common Courses (Courses in Turkish)

	FALL TERM
February 26, 2026; Thursday	Last Day for Changing the "I" (Incomplete) Grades for the Previous Term
February 27, 2026; Friday	Last Day for International Students to Withdraw
February 27, 2026; Friday	Last Day for Add/Drop
March 06, 2026; Friday	Last Day for Late Registration
March 08, 2026; Sunday	Last Day for the Payment of the 7th Instalment of the Fees (for 8 Instalments)
March 19-22, 2026; Thursday-Sunday	Public Holiday
March 30, 2026; Monday	Last Day for Add/Drop for New International Students
April 06-April 11, 2026; Monday-Saturday	Mid-term Exams
April 06-April 10, 2026; Monday-Friday	English Preparatory School Module 3 Final Exams
April 08, 2026; Wednesday	Last Day for the Payment of the 8th Instalment of the Fees (for 8 Instalments)
April 23, 2026; Thursday	Public Holiday
May 01, 2026; Friday	Public Holiday
May 08, 2026; Friday	Last Day for Withdrawal
May 08, 2026; Friday	Identification of Courses for the Following Academic Term and Commencement of Work on the Timetable

	FALL TERM
May 19, 2026; Tuesday	Public Holiday
May 18, 2026; Monday	Last Day for Entry of NA Grades into the System
May 22, 2026; Friday	Last Day of Classes
May 22, 2026; Friday	Last day of Classes for the Faculty of Medicine; Years 1, 2 and 3
May 27-31, 2026; Wednesday-Sunday	Public Holiday
June 01- 10, 2026; Monday-Wednesday	Final Exams
June 05, 2026; Friday	Last day of Classes for the Faculty of Medicine: Years 4 and 5
June 11, 2026; Thursday	Final Exam for the Faculty of Medicine: Year 2
June 12, 2026; Friday	Final Exam for the Faculty of Medicine: Year 1
June 12, 2026; Friday	Final Exam for the Faculty of Medicine: Year 3
June 12, 2026; Friday	Last Day for the Grade Submission
June 12, 2026; Friday	Deadline for Summer School Applications
June 15, 2026; Monday	Applications for Re-sit Exams (Annual Programmes)
June 15-19, 2026; Monday-Friday	English Preparatory School Module 4 Final Exams
June 16-19, 2026; Tuesday-Friday	Re-sit Exams (Annual Programmes)

	FALL TERM
June 22, 2026; Monday	End of the Term (Last Day for the Submission of the Results of the Re-sit Exams)
June 22-26, 2026; Monday-Friday	Graduation Ceremonies
	SUMMER TERM
June 22-24, 2026; Monday-Wednesday	Courses to be assigned to the Academic Staff
June 22-24, 2026; Monday-Wednesday	Activation of the Courses
June 24, 2026; Wednesday	English Language Proficiency Exam for Postgraduate Students
June 24-26, 2026; Wednesday-Friday	Course Registration
June 26, 2026; Friday	Last Day for Postgraduate thesis juries
June 26, 2026; Friday	English Language Proficiency Exam for Undergraduate Students
June 29, 2026; Monday	Last day of Classes for the Faculty of Medicine: Year 6
June 29, 2026; Monday	Classes Commence (including the Preparatory Schools)
July 20, 2026; Monday	Public Holiday
August 01, 2026; Saturday	Public Holiday
August 07, 2026; Friday	Last Day of Classes (including the Preparatory Schools)
August 10-15, 2026; Monday-Saturday	Final Exams (including the Preparatory Schools)

	SUMMER TERM
August 17, 2026; Monday	Last Day for the Grade Submission
August 18, 2026; Tuesday	End of Term
August 24-28, 2026; Monday-Friday	Diploma Distribution

Registration and Admission Procedures

International Student Affairs is in the Faculty of Communication building and is open from Monday to Friday, between 08:00 and 17:00. Students can obtain information about faculties, complete registration procedures, and request documents such as exam entrance certificates, student certificates, and transcripts from the International Student Affairs Office.

Course Registration

Course registration is conducted online each semester. After completing the semester tuition payment, students can register for their courses via the online system at <http://ogrsis.neu.edu.tr>.

To access this system, each student is provided with a student ID number and a personal password by the faculty secretary. After selecting their courses through the system, students must also obtain approval from their academic advisors via the same platform.

The registration process is also outlined on the university's official website. However, students who have not paid their tuition fees or submitted their payment receipts to the Student Affairs Office will not be able to proceed with online registration. Final approval of course registration is completed by the academic advisors of the department.

Additionally, students may complete course registration by meeting in person with their academic advisors within their departments. During the registration period, as indicated in the academic calendar, students are expected to consult with their advisors for course selection and academic guidance.

Add/Drop and Withdrawal

Each semester, specific Add/Drop and Course Withdrawal dates are determined and announced in the academic calendar. During this period, students can attend their registered courses and, if they wish, make changes by adding or dropping courses. All course withdrawal, course change, or course addition procedures must be completed within the dates specified in the academic calendar. Students must consult with their academic advisors to carry out the requested changes.

Lateral and Vertical Transfers

Students who wish to apply for a lateral or vertical transfer must apply to the Student Affairs Office. After the application is approved, the student must provide an official transcript from their previous university to the department they have been admitted to. Before the student begins their education, the Department Head/Dean and

the assigned academic advisor will evaluate whether the courses previously taken are equivalent to the courses in the current program.

For students who are citizens of the Republic of Türkiye, the rules regarding transfers to Near East University can be reviewed at the following links in accordance with the Council of Higher Education (YÖK) and university regulations:

<http://www.yok.gov.tr/4767>

<https://neu.edu.tr/wp-content/uploads/2023/05/29/YDU-Yatay-Gecis-Yonetmeligi-29.05.2023.pdf>

Communication with Academic Staff

Subject	Description
Course Materials and Content	All course materials, weekly content, and announcements are shared via the UZE BİM platform: https://uzebim.neu.edu.tr/
Email Communication	You can contact academic staff through their institutional email addresses .
Face-to-Face Meetings	You can meet with academic staff during their office hours , which are posted on their office doors in the faculty building.
Academic Staff Information	CVs and contact information of academic staff are available at: https://hukuk.neu.edu.tr/kisiler/akademik-personel/

Class Attendance and Excused Absences

Students are required to attend at least 70% of the total course hours for each course. If a student is unable to attend an exam, they must submit their medical report (issued by Near East University Hospital or a state hospital) within 3 working days following the exam date. Otherwise, the student will lose the right to take the make-up exam.

Students are responsible for following the make-up exam schedule through the university's announcements page or the instructor's personal page. If a student misses a previously announced make-up exam without valid excuse, they will lose the right to take that exam.

International Student Office

Near East University International Student Office provides support and counselling in the educational and social lives of foreign students studying at our university, from registration to graduation. International Student office ensure that international students who study at our university return to their countries fully equipped with good memories and that more students from these countries apply to our university.

International Student Office Working Hours:

Monday to Friday 08:00 – 17:00.

Closed on official holidays.

International Student Office Contact Information:

Director of International Student Office: Asst. Prof. Dr. Rana Serdaroglu

Phone: 0392 223 6464

E-Mail: rana.serdaroglu@neu.edu.tr

Campus Life

Library

Located directly across from the Faculty of Economics and Administrative Sciences building, the Grand Library features over 1,000,000 open-shelf books, 150 million electronic journals, 7,000 DVDs, 17 film viewing booths, 12 individual and group study rooms, 4 lecture halls with 1,000 seats, a theatre hall with a capacity of 350, a cafeteria for 600, and 600 study desks. This makes it a world-class cultural and information-access centre. The library is open 24/7 and is free of charge. The information centre, equipped with the latest digital technologies, is accessible from anywhere via the internet. Students can also access information throughout the campus via wireless internet.

Social Activities and Student Clubs

Students can participate in various activities throughout their studies, including university-sponsored conferences and club activities that encourage social engagement. Some active clubs include the Law Club, Nature and Sports Club, Scientific Research and Health Club, Theatre Club, Photography Club, and Tango Club. For more information, visit:

<https://neu.edu.tr/kampusteyasam/sosyal-ve-kulturel-kulupler/>

The campus also features the country's first and only Olympic Indoor Swimming Pool, covering 2,700 m², with a height of 16 meters, dimensions of 50 x 21 meters, 3,100 tons of water capacity, central heating, 1,000 spectator seats, and diving towers at 3, 5, 7, and 10 meters. Swimming courses are offered in both summer and winter.

<https://neu.edu.tr/kampusteyasam/olimpik-kapali-yuzme-havuzu/>

Psychological Counselling Services

Since 1995, the university has offered free psychological counselling. The Counselling Centre is located on the first floor of the Faculty of Law building. It operates by appointment and is open weekdays from 09:00–13:00 / 14:00–16:00.

Office of the Dean of Students

This office aims to provide an integrated university life where students and alumni feel supported in all aspects of their personal, cultural, social, and professional development. The Dean of Students offers various services and programs to support academic and personal growth, instilling a sense of confidence in students as they prepare for life beyond graduation.

Units under the Dean of Students include Student Counselling and Communication Unit, Psychological Counselling Unit, Student Activities Unit, NEU ideas Unit, Career Planning Unit, Social Responsibility Projects Unit, Students with Disabilities Unit, Alumni Affairs Unit. If you require support in accessing courses due to a disability, please contact the Accessible Support Unit: engelsiz@neu.edu.tr

Student Counselling and Communication Unit

In cases where students face unexpected or uncontrollable circumstances that affect their academic responsibilities, they can submit petitions through the online system or via email for issues such as refunds, academic matters, job applications, accommodation, or financial concerns: petitions@neu.edu.tr

Sports Facilities

The university offers a wide range of modern sports facilities to promote a healthy lifestyle among students, staff, and faculty. Facilities include an Olympic swimming pool, tennis courts, football fields, gymnastics halls, and both indoor and outdoor sports complexes.

Our Olympic Indoor Swimming Pool has a 1,000-seat capacity, modern amenities, and a café. Activities such as water polo, diving, and synchronized swimming, as well as swimming lessons, are regularly held. The Sports Tower is a high-tech fitness centre for all age groups, offering classes and sessions in: Fitness, Step, Aerobics, Spinning, TRX, Kangoo Jumps, Pilates, Yoga, Boxing, Karate, Dance education, Nutrition & diet services, with special sections for children and women. RA25 Sports Hall hosts competitions in basketball, handball, volleyball, and badminton, and functions as a venue for ceremonies and concerts with its advanced sound system.

For more details:

<https://neu.edu.tr/kampuste-yasam/spor/>

<https://neu.edu.tr/wp-content/uploads/2018/12/21/spor-kule-brosur-21.12.18.pdf>

Atatürk Culture and Congress Centre (AKKM)

This state-of-the-art venue hosts national and international congresses, seminars, conferences, and cultural events. It features various-sized meeting halls, modern audiovisual equipment, and spaces for art exhibitions, concerts, theatre performances, and more — enhancing campus life through arts and culture.

<https://neu.edu.tr/kampuste-yasam/ataturk-kultur-ve-kongre-merkezi/>

Restaurants and Cafeterias

The campus features a wide range of food and beverage outlets, including the Main Cafeteria, Faculty Cafeteria, Hospital Cafeteria, and others with a total service capacity of 4,500 people. Across campus, there are 22 cafes and restaurants offering healthy, affordable meals, with options for vegetarians and vegans.

Some of the dining facilities include:

Cafe Hastane 1 & 2, Cafe Bigla, Cafe Dental, Cafe Ecza, Cafe Saray, Chicken House, Cafe Library, Cafe Bridge, Cafe Veterinerlik, Gusto Cafe, Cafe Sağlık, Vitamin Cafe, Cafe 535, Cafe AKKM, Book Cafe, Cafe Laundry, Hospital Restaurant, Kebap House, Pizza Pizza, The Kaffo, Bakery & Patisserie, and the 9th Floor Restaurant.

For more information:

<https://neu.edu.tr/kampuste-yasam/kantin-ve-kafeteryalar/>

Market & Supermarket

IKAS Supermarket

Located on our campus, IKAS Supermarket serves campus residents with a wide range of products and extended working hours to meet all their daily needs. Additionally, there is a branch of IKAS Supermarket located under Dormitory Building 1, designed to serve students' essential needs.

Working Hours:

Weekdays/Weekends: 07:30 – 22:00

IKAS Supermarket Express

IKAS Supermarket Express, located within the Near East Campus at Near East Fuel Station, is open 24/7. Discounts available to Near East Group employees are also valid at this location.

NEU Event Park Drift Area

For those seeking speed, control, and excitement, NEU Event Park Drift Area offers an unforgettable driving experience. Under the supervision of two expert instructors, you will not only learn how to drift, but also improve your safe and effective driving techniques. Tire and fuel costs are included in the training packages. Each session lasts 30 minutes.

NEU Event Park offers 4 different training packages, tailored to various expectations. There is even a special course for young car enthusiasts: children aged 6–12 can participate in a manual driving course designed especially for them. For international visitors, accelerated 3-lesson programs are available to help them quickly learn the basics of drifting. Upon successful completion of the training program, a certificate of participation is awarded to all participants (excluding tourist guests and children's courses). The drift area can also host special events such as birthday parties and concerts.

Working Hours:

- Weekdays: 16:00 – 21:00
- Weekends: 09:00 – 21:00 Flexible closing hours are available for special events or upon request.

For detailed information about packages and pricing: Phone: +90 548 821 21 24

Accessible Cinema Hall

The newly renovated “Accessible Cinema” Hall at the Faculty of Communication, Near East University, offers a modern and inclusive experience for cinema enthusiasts and event participants. Originally launched in 1997 with the support of Telsim, the hall has recently undergone a comprehensive renovation and is now more equipped and comfortable than ever.

The Accessible Cinema features 40 fixed seats, with a flexible setup that can accommodate up to 60 people when needed. It is equipped with a state-of-the-art projection system compatible with all types of computers and has a powerful sound system to ensure an enhanced audio experience.

One of the hall’s most significant features is its fully accessible ramp, which provides seamless access from the outside entrance to the seating area, allowing individuals with disabilities to enjoy events without barriers. In addition to film screenings, the Accessible Cinema is also physically suited for mini workshops and various events.

IKAS Patisserie & Bakery

One of the most popular spots on the Near East University campus, IKAS Patisserie & Bakery welcomes guests with a delightful atmosphere and a wide variety of delicious offerings. The venue has a total seating capacity of 40 people, including 20 indoor and 20 outdoor seats, allowing visitors to enjoy their time both inside and in the open air. In addition to meeting the university’s in-house needs for cakes, pastries, savoury snacks, desserts, and ice cream, IKAS Patisserie & Bakery also serves fresh and tasty products to external guests. Soon, it plans to expand its kitchen and begin producing its own bread. For those focused on healthy living, specially made diet desserts and drinks designed for pre- and post-workout consumption will also be available.

With an extensive menu of hot and cold beverages, the patisserie caters to all tastes and also takes custom orders for birthday cakes and special celebrations. The outdoor garden area has been designed to offer enjoyment all year round — cool shaded areas in summer, and warm cozy spots with stoves in winter. Parking is available for guests, and the venue especially welcomes those seeking a peaceful breakfast experience on weekends. On Saturdays and Sundays, rich classic and English breakfast options are served until noon — a perfect way to start your day!

Opening Hours: Weekdays / Weekends: 07:00 – 01:00

Photocopy Services

Near East University offers photocopying and printing services at various locations across campus for students and staff. These service centres aim to provide fast and reliable solutions for educational and academic needs. Photocopy centres are available in faculties with high printing demands, such as the Faculty of Architecture, Faculty of Medicine, and Faculty of Education. These centres offer specialized printing services, including large-format AutoCAD printouts for architecture students. Additionally, thesis binding services are available for students preparing their theses. Along with basic services like photocopying and printing, document scanning and various binding options are also provided. A stationery shop within the Near East University Library offers services such as photocopying and thesis binding.

Cyprus Printing Global

Hospital Branch: +90 546 990 01 03

Education Palace Branch: +90 546 990 01 04

Architecture Faculty Branch: +90 546 990 01 05

Nuroğlu Stationery (Library): +90 533 866 89 36

Bank & ATM

On campus, you will find branches of Near East Bank and Türkiye İş Bankası, as well as an ATM for Ziraat Bankası. These banking services are conveniently located to ensure that both students and staff can easily carry out their financial transactions.

Post Office

The Post Office at Near East University provides postal services to all students and staff. It is located on campus for easy access to both send and receive mail.

Location: Ground Floor, Faculty of Economics and Administrative Sciences

Near East Fuel Station

The on-campus fuel station provides university staff with a fast and convenient way to meet their fuel needs. In addition, all Near East University employees can benefit from discounted fuel services by using the Near East Fuel Discount Card. For more information about Near East Fuel Station, please visit the official website: <https://yakindoguakaryakit.com/>

Useful Phone Numbers

For more details about telephone contacts at Near East University and to find the phone numbers for specific departments or services, please visit the university's official website: <https://neu.edu.tr/telefon-rehberi/>

Campus Traffic Rules and Safety

Near East University's campus is subject to specific traffic rules to ensure the **safety and comfort** of students, staff, and visitors. These rules are **monitored 24/7** by NEU personnel, and **penalties may be applied** in case of violations. A full understanding and application of these rules contribute to creating a safer and more orderly campus environment.

Traffic Flow and Right of Way: Traffic on the NEU campus flows in the left lane. Therefore, drivers must keep left and follow the right-of-way rules to ensure smooth traffic movement.

Pedestrian and Bicycle Priority Campus: Please give priority to pedestrians and cyclists in crosswalks and designated bike lanes. Slow down and proceed with caution in these areas to ensure safety.

Speed Limit: The maximum speed limit on campus is 40 km/h. Adhering to this limit significantly reduces the risk of accidents and enhances overall safety.

Horn and Loud Music: Using car horns and playing loud music is prohibited on campus. Following this rule helps maintain a peaceful environment for everyone.

Traffic Signs and Directions: Traffic signs and directional markers are placed throughout the campus to support safe and orderly traffic flow. Please always follow these signs.

Routes and Parking Areas: Use designated driving routes and park only in designated areas in accordance with the campus parking regulations. This ensures safety and avoids traffic disruption.

Monitoring and Security: Traffic rules are regularly monitored by security personnel. Please follow their instructions and do not hesitate to ask for help if needed. Adhering to safety measures ensures a smooth and respectful traffic environment for all. By respecting these rules, we can collectively contribute to a safer and more peaceful campus.

Transportation Services

Near East University provides its staff with comfortable and free transportation options, ensuring easy access to both the campus and surrounding areas. The university's transportation services cover routes that are scheduled according to class and work hours. Free university buses departing from the campus and heading to various regions and the city centre offer a wide transportation network. This service aims to reduce vehicle usage and promote environmentally friendly shared transport. Free transportation services are a significant support in facilitating the daily lives of staff.

Campus–Nicosia and Nicosia–Campus Routes: Shuttle services between the campus and Nicosia operate from 06:45 AM to 10:15 PM. These reciprocal services allow our staff to travel comfortably and safely between the campus and Nicosia. The routes cover a wide area. Detailed information about transportation services and routes is available on the university's website: <https://bus.neu.edu.tr/>

Intercity Free Shuttle Services: Near East University offers free shuttle services for staff commuting from regions such as Kyrenia (Girne), Famagusta (Mağusa), and Güzelyurt. These services are organized to ensure staff can reach the campus comfortably.

In-Campus Shuttles: Within the campus, there is a free shuttle service between the residential area and faculties or other administrative units. These shuttles facilitate quick and easy access across campus.

Walking Distance Accessibility: The Near East University campus is designed to allow safe walking access to most places. Classrooms, the library, the dining hall, and other key facilities are located within short walking distances. The campus design promotes physical activity and minimizes the need for motor vehicles. Additionally, the university provides alternative eco-friendly transport options such as bicycles and electric scooters for staff use.

By offering these transportation options, Near East University enables its staff to easily access campus events and resources. It supports its personnel in maintaining a productive work-life balance through a safe and extensive transportation network across its large campus area.

Near East University | Engineering Faculty
Automotive Engineering Department | Student Information Handbook
2025–2026 Academic Year

? Who ARE YOU? WHERE ARE YOU?

- Faculty Established Year: 1988
- Department Established: 2010
- Aim: To be an internationally recognized and accredited faculty
- Programs: 26 bachelor, 12 masters', 4 PhD
- Education Language: Turkish and English
- Student Number: +1500

? ----DEPARTMENT

- Head of Department: Assist. Prof. Dr. Cemal Kavalcioglu
- Contact: cemal.kavalcioglu@neu.edu.tr
- Degree Awarded: B.Sc. in Automotive Engineering
- Total Credit: 240 ECTS
- Elective Courses: At least 13 elective courses

? GRADUATION REQUIREMENTS

- To complete all courses with at least a DD/S letter grade
- Cumulative Grade Point Average (CGPA): At least 2.00 / 4.00
- 70% class attendance requirement
- 12 elective course must be taken

? REGISTRATION & ADMISSION PROCEDURES

1. Pay the tuition fee
2. Register for courses via ogrsis.neu.edu.tr
3. Get advisor approval
4. If necessary, make changes during the "add/drop" week

? CONTACT

- Deanship: 90 (392) 223 64 64 – 5214, dekanlik.muhendis@neu.edu.tr
- International Student Office: 0392 223 6464, beliz.ozdiren@neu.edu.tr, buse.kocak@neu.edu.tr

? MORE INFORMATION

- Faculty Web: <https://muhendislik.neu.edu.tr>
- UZEBİM Platform: <https://uzebim.neu.edu.tr>

? CAMPUS LIFE

- ? Library: Open 7/24 open, 1 million books, 150 million digital resource
- ? Dining: 22 restaurant & cafe, vegan/vegetarian menu
- ? Sport: Olympic pool, yoga, fitness, dietitian support
- ? Psychological Counselling: Free, appointment-based system

? DO NOT FORGET!

- At Near East University, education is not only academic; it's an integrated journey of social, cultural, and personal development. Let this brochure be your guide as you take your first steps!